

Data sheet

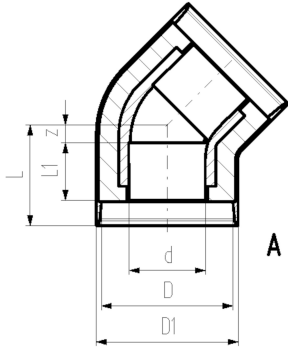
valid from: 8/15/24



COOL-FIT PE Plus elbow 45°, PE100
Insulated d32-d225
Metric, SDR11

Model:

- Insulation made from PUR foam
- Outer jacket impact and UV resistant. Color: Black
- Electrofusion Fitting with integrated sealing lip, for a water and vapor tight seal



d (mm)	D (mm)	Code	weight (lb)	D1 (mm)	L (mm)	L1 (mm)	z (mm)	Type	closest inch (inch)
32	90	738 153 108	0.238	97	72	36	11	A	1
40	110	738 153 109	0.357	117	76	40	11	A	1.25
50	110	738 153 110	0.481	117	82	44	13	A	1.5
63	125	738 153 111	0.694	132	89	48	16	A	2
75	140	738 153 112	1.433	147	98	55	18	A	2.5
90	160	738 153 113	2.271	168	117	62	30	A	3
110	180	738 153 114	2.800	188	138	72	41	A	4
140	225	738 153 116	6.521	233	157	84	48	A	5
160	250	738 153 117	9.039	258	161	90	46	A	6
225	315	738 153 120	38.808	324	278	110	143	A	8

The technical data are not binding. They neither constitute expressly warranted characteristics nor guaranteed properties nor a guaranteed durability. They are subject to modification. Our General Terms of Sale apply.

Georg Fischer Piping Systems Ltd, Postfach, CH-8201 Schaffhausen/Switzerland Phone +41 -(0)52-631 1111 e-mail: info.ps@georgfischer.com Internet: <http://www.gfps.com>