



Backing flange, PP-SS
For socket fusion systems inch/ANSI

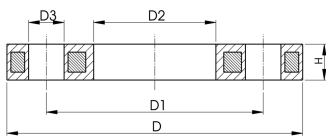
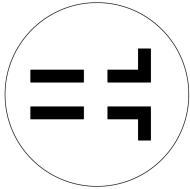
Model:

- Material: PP (30% glass-fiber reinforced) with steel ring
- ASME: ANSI/ASME B 16.5 class 150, ASTM D4024, BS 1560, BS EN 1759
- UV-resistant

AL: number of holes

* FM 1613 approved - 15 bar

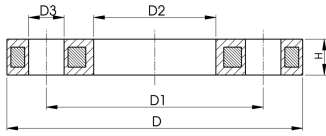
** Profiled loose flange



d	DN	PN	Code	weight	D	D1	D2	D3	H max.	AL	SC
(mm)	(mm)	(bar)		(kg)	(mm)	(mm)	(mm)	(mm)	(mm)		
20	15	16	727 700 206	0.216	95	65	28	14	12	4	M12
20	15	16	727 701 206	0.213	95	60	28	16	12	4	M12
25	20	16	727 700 207	0.279	105	75	34	14	12	4	M12
25	20	16	727 701 207	0.260	105	70	34	16	12	4	M12
32	25	16	727 700 208	0.429	115	85	42	14	16	4	M12
32	25	16	727 701 208	0.416	115	79	42	16	16	4	M12
40	32	16	727 700 209	0.621	140	100	51	18	16	4	M16
40	32	16	727 701 209	0.730	140	89	51	16	16	4	M16
50	40	16	727 700 210	0.722	150	110	62	18	20	4	M16
50	40	16	727 701 210	0.809	150	98	62	16	18	4	M16
63	50	16	727 700 211	0.900	165	125	78	18	20	4	M16
63	50	16	727 701 211	0.866	165	121	78	19	18	4	M16
75	65	16	727 700 212	1.110	185	145	92	18	20	4	M16
75	65	16	727 701 212	1.117	185	140	92	19	18	4	M16
90	80	16	724 700 313	1.390	200	160	108	18	20	8	M16
90	80	16	727 700 213	1.369	200	160	110	18	20	8	M16
90	80	16	727 700 313	1.390	200	160	108	18	20	8	M16
90	80	16	727 701 213	1.492	200	152	110	19	20	4	M16
90	80	16	727 701 313	1.499	200	152	108	19	20	4	M16
110	100	16	724 700 314	1.407	223	180	128	18	20	8	M16
110	100	16	727 700 214	1.522	220	180	133	18	20	8	M16
110	100	16	727 700 314	1.407	220	180	128	18	20	8	M16
110	100	16	727 701 214	1.695	229	190	133	19	20	8	M16
110	100	16	727 701 314	1.739	229	190	128	19	20	8	M16
125	100	16	724 700 315	1.408	223	180	135	18	20	8	M16
125	100	16	727 700 315	1.408	220	180	135	18	20	8	M16
125	125	16	727 700 815	2.475	250	210	150	18	26	8	M16
140	125	16	724 700 316	2.318	250	210	158	18	24	8	M16
140	125	16	727 700 716	2.318	250	210	158	18	24	8	M16
140	125	16	727 700 816	2.033	250	210	167	18	26	8	M16
160	150	16	724 700 317	3.491	285	240	178	22	28	8	M20
160	150	16	727 700 717	3.491	285	240	178	22	24	8	M20
160	150	16	727 700 817	3.167	285	240	190	22	26	8	M20
180	150	16	724 700 318	3.108	285	240	188	22	28	8	M20
180	150	16	727 700 718	3.108	285	240	188	22	24	8	M20
200	200	16	724 700 319	3.549	344	295	235	22	31	12	M20
200	200	16	727 700 719	5.600	340	295	235	22	27	8	M20
200	200	16	727 700 819	6.143	340	295	226	22	29	8	M20
225	200	16	724 700 320	3.380	344	295	238	22	31	12	M20
225	200	16	727 700 720	5.533	340	297	238	22	27	8	M20
225	200	16	727 700 820	4.448	340	297	250	22	29	8	M20
250	250	16	724 700 321	6.390	410	355	288	26	35	12	M24
250	225	16	727 700 031	8.340	395	325	277	22	32	8	M20
250	250	10	727 701 321	6.000	406	362	293	25	30	12	M24
250	250	16	727 700 721	6.632	395	350	288	22	30	12	M20
250	250	16	727 700 821	7.179	395	350	277	22	32	12	M20
280	250	16	724 700 322	6.310	410	355	294	26	36	12	M24
280	250	16	727 700 722	6.573	395	350	294	22	30	12	M20
280	250	16	727 700 822	5.547	395	350	310	22	32	12	M20

Data sheet

valid from: 12/21/24



d (mm)	DN (mm)	PN (bar)	Code	weight (kg)	D (mm)	D1 (mm)	D2 (mm)	D3 (mm)	H max. (mm)	AL	SC
315	300	16	724 700 323	9.740	455	410	338	26	43	12	M24
315	300	16	727 700 723	7.903	445	400	338	22	34	12	M20
315	300	16	727 700 823	6.980	445	400	348	22	36	12	M20
315	300	10	727 701 322	11.800	483	432	338	25	34	12	M24
355	350	16	724 700 324	15.203	521	470	376	26	55	16	M24
355	350	16	727 700 724	14.587	515	460	376	23	40	16	M20
355	350	16	727 700 824	12.465	515	460	388	23	42	16	M20
355	350	10	727 701 323	17.900	540	476	376	29	42	12	M27
400	400	16	724 700 325	20.600	582	525	430	30	56	16	M27
400	400	16	727 700 725	20.034	574	515	430	26	40	16	M24
400	400	16	727 700 825	17.607	574	515	442	26	42	16	M24
400	400	10	727 701 324	24.500	597	539	429	29	44	16	M27
450	500	10	724 700 426	25.600	685	620	517	26	56	20	M24
500	500	10	724 700 427	21.061	685	620	533	26	56	20	M24
560	600	10	724 700 428	35.000	796	725	618	30	68	20	M27
630	600	10	724 700 429	28.500	800	725	645	30	68	20	M27
710	700	6	724 700 430	25.500	912	840	740	30	49	24	M27
800	800	6	724 700 431	39.300	1026	950	843	33	58	24	M30
900	900	6	724 700 432	48.500	1129	1050	947	33	62	28	M30
450	500	10	727 701 325	33.600	712	635	540	32	53	20	M30

The technical data are not binding. They neither constitute expressly warranted characteristics nor guaranteed properties nor a guaranteed durability. They are subject to modification. Our General Terms of Sale apply.

Georg Fischer Piping Systems Ltd, Postfach, CH-8201 Schaffhausen/Switzerland Phone +41 -(0)52-631 1111 e-mail: info.ps@georgfischer.com Internet: <http://www.gfps.com>