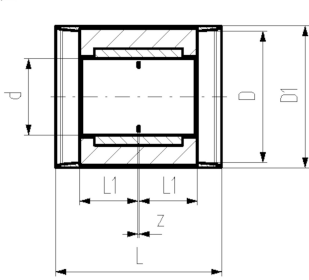




## COOL-FIT 4.0 Coupler d32-d225

### Model:

- Pre-insulated PE100 **SDR11**, metric
- Insulation made from PUR foam
- Outer jacket impact and UV resistant. Color: Black
- Electrofusion Fitting with integrated sealing lip, for a water and vapor tight seal



d/D (mm)	SDR	DN (mm)	PN (bar)	Code	weight (kg)	D1 (mm)	L (mm)	L1 (mm)	z (mm)	closest inch (inch)
32/90	11	25	16	<b>738 913 108</b>	0.179	97	127	36	5	1
40/110	11	32	16	<b>738 913 109</b>	0.129	117	133	40	3	1 ¼
50/110	11	40	16	<b>738 913 110</b>	0.169	117	141	44	3	1 ½
63/125	11	50	16	<b>738 913 111</b>	0.240	132	149	48	3	2
75/140	11	65	16	<b>738 913 112</b>	0.520	147	163	55	3	2 ½
90/160	11	80	16	<b>738 913 113</b>	0.750	168	178	62	4	3
110/180	11	100	16	<b>738 913 114</b>	0.831	188	198	72	4	4
160/250	11	150	16	<b>738 913 117</b>	1.726	258	233	90	3	6
225/315	11	200	16	<b>738 913 120</b>	3.783	324	275	110	5	8

The technical data are not binding. They neither constitute expressly warranted characteristics nor guaranteed properties nor a guaranteed durability. They are subject to modification. Our General Terms of Sale apply.

Georg Fischer Piping Systems Ltd, Postfach, CH-8201 Schaffhausen/Switzerland Phone +41 -(0)52-631 1111 e-mail:  
info.ps@georgfischer.com Internet: <http://www.gfps.com>