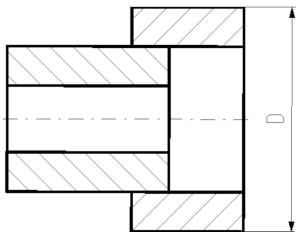
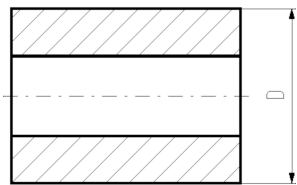
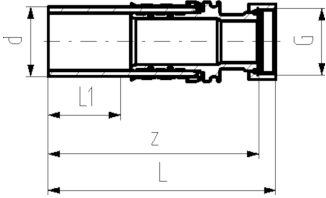




COOL-FIT 2.0 Adaptor fitting PE/stainless steel
With loose union nut G

Model:

- Spigot fitting PE100 SDR11, metric with free end
- Stainless steel 1.4404 / 316L with female thread G
- Including flat seal EPDM
- Including Insulation made from NBR foam



| d (mm) | Thread Type | Size (inch) | DN | SDR | Code | weight (kg) | D (mm) | L (mm) | L1 (mm) | z (mm) |
|-----------|-------------|----------------|----|-----|--------------------|----------------|-----------|-----------|------------|-----------|
| 32 | G | ½ | 25 | 11 | 738 944 308 | 0.204 | 70 | 135 | 36 | 126 |
| 32 | G | ¾ | 25 | 11 | 738 944 318 | 0.219 | 70 | 135 | 36 | 129 |
| 32 | G | 1 | 25 | 11 | 738 944 328 | 0.317 | 70 | 135 | 36 | 129 |
| 32 | G | 1 ¼ | 25 | 11 | 738 944 338 | 0.317 | 108 | 137 | 36 | 131 |
| 40 | G | 1 ¼ | 32 | 11 | 738 944 309 | 0.538 | 78 | 155 | 40 | 148 |
| 40 | G | 1 ½ | 32 | 11 | 738 944 319 | 0.615 | 116 | 157 | 40 | 148 |
| 40 | G | 2 | 32 | 11 | 738 944 329 | 0.815 | 116 | 166 | 40 | 150 |
| 50 | G | 1 ½ | 40 | 11 | 738 944 310 | 0.758 | 88 | 164 | 44 | 154 |
| 50 | G | 1 ¾ | 40 | 11 | 738 944 320 | 0.827 | 88 | 164 | 44 | 155 |
| 50 | G | 2 | 40 | 11 | 738 944 330 | 1.048 | 126 | 178 | 44 | 162 |
| 50 | G | 2 ¼ | 40 | 11 | 738 944 340 | 0.866 | 126 | 148 | 44 | 134 |
| 63 | G | 2 | 50 | 11 | 738 944 311 | 1.237 | 101 | 186 | 48 | 170 |
| 63 | G | 2 ¾ | 50 | 11 | 738 944 321 | 1.344 | 139 | 178 | 48 | 168 |
| 63 | G | 2 ¾ | 50 | 11 | 738 944 331 | 1.230 | 139 | 157 | 48 | 141 |

The technical data are not binding. They neither constitute expressly warranted characteristics nor guaranteed properties nor a guaranteed durability. They are subject to modification. Our General Terms of Sale apply.

Georg Fischer Piping Systems Ltd, Postfach, CH-8201 Schaffhausen/Switzerland Phone +41 -(0)52-631 1111 e-mail:
 info.ps@georgfischer.com Internet: <http://www.gfps.com>