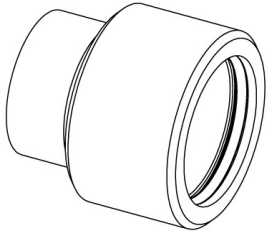
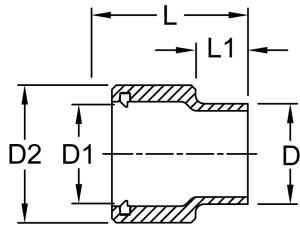


Blucher Transition Fitting (PushxSPG)



Size (inch)	DN (mm)	Blucher (mm)	Code
1 ½	40	50	37D187640
2 ½	65	75	37D187665
4	100	110	37D187610
6	150	160	37D187615



D (inch)	L (inch)	L1 (inch)	D1 (inch)	D2 (inch)	D (mm)	L (mm)	L1 (mm)	D1 (mm)	D2 (mm)
1.90	3.59	1.50	2.01	2.80	48.3	91.2	38.1	51.1	71.1
2.88	3.90	1.50	2.99	3.94	73.0	99.1	38.1	75.9	100.1
4.50	4.18	1.50	4.37	5.43	114.3	106.2	38.1	111.0	137.9
6.63	4.77	1.50	6.34	7.68	168.3	121.2	38.1	161.0	195.1

The technical data are not binding. They neither constitute expressly warranted characteristics nor guaranteed properties nor a guaranteed durability. They are subject to modification. Our General Terms of Sale apply.

Georg Fischer Piping Systems Ltd, Postfach, CH-8201 Schaffhausen/Switzerland Phone +41 -(0)52-631 1111 e-mail: info.ps@georgfischer.com Internet: <http://www.gfps.com>