

## Flanges PP-V (full plastic)

### Model:

- Full-plastic flange PP-GF (30% glass-fiber reinforced), with V-groove which applies force evenly on collar
- Metric: ISO 7005, EN 1092, ISO 9624
- ASME: ANSI/ASME B 16.5 class 150, ASTM D2024, BS 1560, BS EN 1759
- With V-groove which applies force evenly on collar
- With integrated bolt-fixing as an assembly aid
- Connecting dimension: ISO 7005 PN 10, EN 1092 PN 10, DIN 2501 PN 10, BS 4504 PN 10
- UV-resistant. Applicable for outside applications
- With integrated bolt-fixing as an assembly aid
- Connecting dimension: ANSI/ASME B 16.5 class 150, ASTM D 4024, BS 1560, BS EN 1759
- **Bolt circle class 150**
- UV-resistant
- Connection dimensions according to ASME B16.5, ASTM D 4024; bolt circle class 150

AL: number of holes

\*) Combined version, metric-ANSI

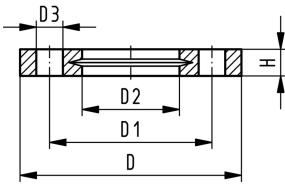
2) Combined version, metric-ANSI

• 727701414, 727700417, 727700419: only for use with original metric flange adaptors

d (mm)	d (inch)	d (inch)	DN (mm)	PN (bar)	Bolt circle	Standard	Design	Code	weight (kg)
20			15	16	PN10	Metric	Butt/Socket	<b>727 700 406</b>	0.093
20		½	15	16	class 150	ASME	Socket	<b>727 701 406</b>	0.091
25			20	16	PN10	Metric	Butt/Socket	<b>727 700 407</b>	0.120
25		¾	20	16	class 150	ASME	Socket	<b>727 701 407</b>	0.120
32			25	16	PN10	Metric	Butt/Socket	<b>727 700 408</b>	0.151
32		1	25	16	class 150	ASME	Socket	<b>727 701 408</b>	0.147
40			32	16	PN10	Metric	Butt/Socket	<b>727 700 409</b>	0.244
40		1 ¼	32	16	class 150	ASME	Socket	<b>727 701 409</b>	0.246
50			40	16	PN10	Metric	Butt/Socket	<b>727 700 410</b>	0.297
50		1 ½	40	16	class 150	ASME	Socket	<b>727 701 410</b>	0.299
63			50	16	PN10	Metric	Butt/Socket	<b>727 700 411</b>	0.362
63		2	50	16	class 150	ASME	Socket	<b>727 701 411</b>	0.361
75			65	16	PN10	Metric	Butt/Socket	<b>727 700 412</b>	0.487
75		2 ½	65	16	class 150	ASME	Socket	<b>727 701 412</b>	0.492
90			80	16	PN10	Metric	Socket	<b>727 700 413</b>	0.550
90			80	16	PN10	Metric	Butt	<b>727 700 513</b>	0.544
90		3	80	16	class 150	ASME	Socket	<b>727 701 413</b>	0.605
90		3	80	16	class 150	ASME	Butt	<b>727 701 513</b>	0.607
110			100	16	PN10	Metric	Socket	<b>727 700 414</b>	0.640
110			100	16	PN10	Metric	Butt	<b>727 700 514</b>	0.643
110		4	100	16	class 150	ASME	Socket	<b>727 701 414</b>	0.704
110		4	100	16	class 150	ASME	Butt	<b>727 701 514</b>	0.736
125			125	16	PN10	Metric	Butt	<b>727 700 515</b>	0.635
140			125	16	PN10	Metric	Socket	<b>727 700 416</b>	0.781
140			125	16	PN10	Metric	Butt	<b>727 700 516</b>	0.842
160			150	16	PN10/class 150	Metric/ASME	Socket	<b>727 700 417</b>	1.050
160		6	150	16	PN10/class 150	Metric/ASME	Butt	<b>727 700 517</b>	1.200
180			150	16	PN10	Metric	Butt	<b>727 700 518</b>	1.200
200			200	16	PN10/class 150	Metric/ASME	Socket	<b>727 700 419</b>	1.629
200		8	200	16	PN10/class 150	Metric/ASME	Butt	<b>727 700 519</b>	1.400
225			200	16	PN10/class 150	Metric/ASME	Socket	<b>727 700 420</b>	1.400
225		8	200	16	PN10/class 150	Metric/ASME	Butt	<b>727 700 520</b>	1.400
250			250	10	PN10	Metric	Socket	<b>727 700 421</b>	2.229
250			250	10	PN10	Metric	Butt	<b>727 700 521</b>	2.052
250		10	250	10	class 150	ASME	Butt	<b>727 701 521</b>	2.241
280			250	10	PN10	Metric	Socket	<b>727 700 422</b>	1.651
280			250	10	PN10	Metric	Butt	<b>727 700 522</b>	1.700
280		10	250	10	class 150	ASME	Socket	<b>727 701 422</b>	1.838
280		10	250	10	class 150	ASME	Butt	<b>727 701 522</b>	2.173
315			300	10	PN10	Metric	Socket	<b>727 700 423</b>	2.461

# Data sheet

valid from: 8/1/24



d (mm)	d (inch)	d (inch)	DN (mm)	PN (bar)	Bolt circle	Standard	Design	Code	weight (kg)
315			300	10	PN10	Metric	Butt	<b>727 700 523</b>	2.400
315		12	300	10	class 150	ASME	Socket	<b>727 701 423</b>	3.482
315		12	300	10	class 150	ASME	Butt	<b>727 701 523</b>	3.627
355			350	10	PN10	Metric	Socket	<b>727 700 424</b>	3.000
355			350	10	PN10	Metric	Butt	<b>727 700 524</b>	4.440
400			400	10	PN10	Metric	Socket	<b>727 700 425</b>	5.135
400			400	10	PN10	Metric	Butt	<b>727 700 525</b>	5.624

D (mm)	D1 (mm)	D2 (mm)	D3 (mm)	H max. (mm)	AL	SC	d (mm)
95	65	28	14	16	4	M12	
95	60	28	16	16	4	M12	
105	75	34	14	17	4	M12	
105	70	34	16	17	4	M12	
115	85	42	14	18	4	M12	
115	79	42	16	18	4	M12	
140	100	51	18	20	4	M16	
140	89	51	16	20	4	M16	
150	110	62	18	22	4	M16	
150	98	62	16	22	4	M16	
165	125	78	18	24	4	M16	
165	121	78	19	24	4	M16	
185	145	92	18	26	4	M16	
185	140	92	19	26	4	M16	
200	160	110	18	27	8	M16	
200	160	108	18	27	8	M16	
200	152	110	19	27	4	M16	
200	152	108	19	27	4	M16	
220	180	133	18	28	8	M16	
220	180	128	18	28	8	M16	
229	190	133	19	28	8	M16	
229	190	128	19	28	8	M16	
220	180	135	18	28	8	M16	
250	210	167	18	30	8	M16	
250	210	158	18	30	8	M16	
285	240	190	22	32	8	M20	
285	240	178	22	32	8	M20	160
285	240	188	22	32	8	M20	
340	295	226	22	34	8	M20	
340	295	235	22	34	8	M20	200
340	295	250	22	34	8	M20	
340	295	238	22	34	8	M20	225
395	350	277	22	38	12	M20	
395	350	288	22	38	12	M20	
406	362	288	26	38	12	M20	
395	350	310	22	38	12	M20	
395	350	294	22	38	12	M20	
406	362	310	26	38	12	M20	
406	362	294	26	38	12	M20	
445	400	348	22	42	12	M20	
445	400	338	22	42	12	M20	
483	432	348	26	42	12	M20	
483	432	338	26	42	12	M20	
515	460	388	22	46	16	M20	
515	460	376	22	46	16	M20	
574	515	442	26	50	16	M24	
574	515	430	26	50	16	M24	

# Data sheet

valid from: 8/1/24

---



The technical data are not binding. They neither constitute expressly warranted characteristics nor guaranteed properties nor a guaranteed durability. They are subject to modification. Our General Terms of Sale apply.

Georg Fischer Piping Systems Ltd, Postfach, CH-8201 Schaffhausen/Switzerland Phone +41 -(0)52-631 1111 e-mail: info.ps@georgfischer.com Internet: <http://www.gfps.com>