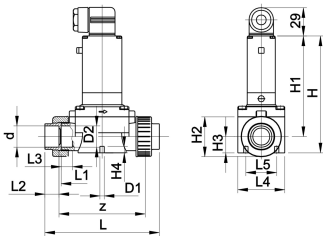
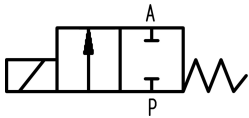




Solenoid valve type 165
Straight-through valve 2/2 ways
24V DC

Model:

- Function A, PN 0.5-6bar
- Material PVDF: with fusion socket metric
- Material PVC-U: with solvent cement socket metric
- Protection class IP 65
- Electrical connection: cable plug
- With manual override



d (mm)	DN (mm)	Cv-value (l/min)	PVC-U EPDM Code	PVC-U FKM Code	PVDF EPDM Code	PVDF FKM Code
20	15	83	199 165 022	199 165 072		
25	20	100	199 165 023	199 165 073		
32	25	233	199 165 024	199 165 074		
40	32	267	199 165 025	199 165 075		
50	40	500	199 165 026	199 165 076		
63	50	600	199 165 027	199 165 077		
20	15	83			199 165 422	199 165 452
25	20	100			199 165 423	199 165 453
32	25	233			199 165 424	199 165 454
40	32	267			199 165 425	199 165 455
50	40	500			199 165 426	
63	50	600			199 165 427	

d (mm)	H (mm)	H1 (mm)	H2 (mm)	H3 (mm)	H4 (mm)	L (mm)	L1 (mm)	L2 (mm)	L4 (mm)	L5 (mm)	z (mm)
20	148	122	53	22	8	148	110	16	63	40	116
25	148	122	53	22	8	154	110	19	62	40	116
32	175	137	76	31	15	190	141	22	85	45	147
40	175	137	76	31	15	198	141	26	85	45	147
50	212	160	105	42	15	254	192	31	115	45	198
63	212	160	105	42	15	268	192	38	115	45	198
20	148	122	53	22	8	147	109	16	63	40	120
25	148	122	53	22	8	151	109	18	62	40	120
32	175	137	76	31	15	185	139	20	85	45	150
40	175	137	76	31	15	189	139	22	85	45	150
50	212	160	105	42	15	245	189	25	115	45	200
63	212	160	105	42	15	253	189	29	115	45	200

The technical data are not binding. They neither constitute expressly warranted characteristics nor guaranteed properties nor a guaranteed durability. They are subject to modification. Our General Terms of Sale apply.

Georg Fischer Piping Systems Ltd, Postfach, CH-8201 Schaffhausen/Switzerland

Phone +41 -(0)52-631 1111

e-mail: info.ps@georgfischer.com

Internet: <http://www.gfps.com>