



Wafer-Style, intermediate installation butterfly valve metal type 039

With hand lever

Flange standard Metric/Inch/ASTM - PN10

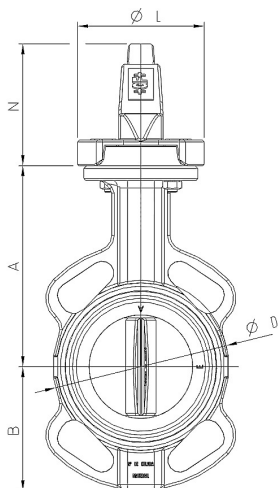
Disc: ductile iron/Rilsan® coated

Model:

- Wafer Style
- Body GGG40 (A 395 / A395 M-99, EN-JIS 1020 EN1563) Rilsan® coating
- Body from DN350 Epoxy® coating
- Installation length: EN 558 row 20
- Interface according to DIN EN ISO 5211
- Pressure range: 16 bar (DN 50-300); 10 bar (DN 350-600)
- Single-piece axis with square profile, up to DN 600 mm 2-pieces axis
- Multiple flange connection: DIN PN 6/10/16; other standard e.g. ANSI/ASME B16.5 Class 150 on request

Option:

- Electric and pneumatic actuator on request
- Other liner material on request



d (mm)	DN (mm)	Size (inch)	PN (bar)	Cv-value (l/min)
63	50	2	16	3167
75	65	2 ½	16	4667
90	80	3	16	7167
110	100	4	16	11833
140	125	5	16	18333
160	150	6	16	26667
225	200	8	16	46667
280	250	10	16	78333
315	300	12	16	115000

d (mm)	DN (mm)	Disc: ductile iron/Rilsan® coated EPDM Code	Disc: stainless steel EPDM Code	Disc: Alu-bronze EPDM Code	Liner: NBR Code	SP	weight (kg)	PF
63	50	199 039 000	199 039 013	199 039 074	199 039 095	1	4.00	3 39 226 201
75	65	199 039 001	199 039 014	199 039 075	199 039 096	1	4.70	3 39 226 201
90	80	199 039 002	199 039 015	199 039 076	199 039 097	1	5.00	3 39 226 201
110	100	199 039 003	199 039 016	199 039 077	199 039 098	1	6.40	3 39 226 201
140	125	199 039 004	199 039 017	199 039 078	199 039 099	1	8.10	3 39 226 201
160	150	199 039 005	199 039 018	199 039 079	199 039 100	1	9.70	3 39 226 201
225	200	199 039 006	199 039 019	199 039 080	199 039 101	1	14.02	3 39 226 201
280	250	199 039 007	199 039 020	199 039 081	199 039 102	1	25.20	3 39 226 201
315	300	199 039 008	199 039 021	199 039 082	199 039 103	1	36.00	3 39 226 201

d (mm)	DN (mm)	d3 (mm)	H (mm)	H1 (mm)	H2 (mm)	H3 (mm)	L (mm)	L1 (mm)	Q (mm)	L2 (mm)	Cv value (Δp=1 psi) (l/min)
63	50	102	318	83	140	95	43	45	32	220	837
75	65	122	340	93	152	95	46	45	51	220	1233
90	80	139	352	98	159	95	46	45	69	220	1893
110	100	159	384	111	178	95	52	45	89	220	3126
140	125	189	413	127	191	95	56	45	115	320	4843
160	150	214	441	143	203	95	56	45	143	320	7045
225	200	269	512	172	245	95	60	45	194	320	12328
280	250	331	529	204	275	50	68	63	243	560	20693
315	300	380	607	242	315	50	78	63	293	560	30380

Data sheet

valid from: 2/7/23



The technical data are not binding. They neither constitute expressly warranted characteristics nor guaranteed properties nor a guaranteed durability. They are subject to modification. Our General Terms of Sale apply.

Georg Fischer Piping Systems Ltd, Postfach, CH-8201 Schaffhausen/Switzerland

Phone +41 -(0)52-631 1111

e-mail: info.ps@georgfischer.com

Internet: <http://www.gfps.com>