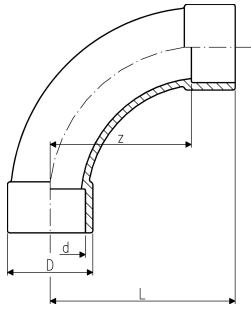


Data sheet

valid from: 8/1/24



Bend 90° PVC metric



d (mm)	Size (inch)	PN (bar)	Code	SP	weight (kg)	z (mm)	D (mm)	L (mm)
20		16	721 000 106	10	0.029	40	27	56
25		16	721 000 107	10	0.049	50	33	69
32		16	721 000 108	10	0.074	64	38	86
40		16	721 000 109	30	0.121	80	47	106
50		16	721 000 110	5	0.298	100	61	131
63		16	721 000 111	6	0.516	126	76	164
75	2 ½	16	721 000 112	5	0.798	150	90	194
90		16	721 000 113	5	1.373	180	108	231
110		16	721 000 114	5	2.699	220	137	281
140	5	16	721 000 116	2	5.204	280	168	356
160		16	721 000 117	1	8.298	320	192	406

The technical data are not binding. They neither constitute expressly warranted characteristics nor guaranteed properties nor a guaranteed durability. They are subject to modification. Our General Terms of Sale apply.

Georg Fischer Piping Systems Ltd, Postfach, CH-8201 Schaffhausen/Switzerland Phone +41 -(0)52-631 1111 e-mail: info.ps@georgfischer.com Internet: <http://www.gfps.com>