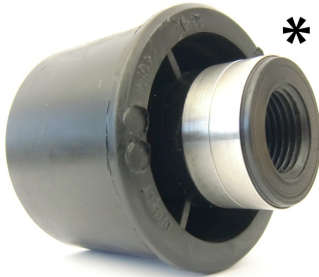




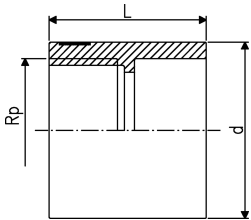
**PE adaptor**  
**Female thread**

- **PE 80 SDR 11 (ISO S5)**
- 5 bar Gas / 12,5 bar Water
- Connection to plastic or metal
- Reinforcing ring stainless (A2)
- For ELGEF Plus Branch Saddle (753 131 000) d63 - 400mm, pipe SDR 11, d75 - 400mm, pipe SDR 17
- Parallel female thread
- **PE 100 SDR 11 (ISO S5)**
- \* 5 bar Gas/ 16 bar water



\*

	d (mm)	Rp (inch)	Part No.	weight (kg)	L (mm)
*	63	½	<b>193 281 617</b>	0.060	68
	63	1 ½	<b>173 281 925</b>	0.088	54



The technical data are not binding. They neither constitute expressly warranted characteristics nor guaranteed properties nor a guaranteed durability. They are subject to modification. Our General Terms of Sale apply.

Georg Fischer Piping Systems Ltd, Postfach, CH-8201 Schaffhausen/Switzerland

Phone +41 -(0)52-631 1111

e-mail: [info.ps@georgfischer.com](mailto:info.ps@georgfischer.com)

Internet: <http://www.gfps.com>