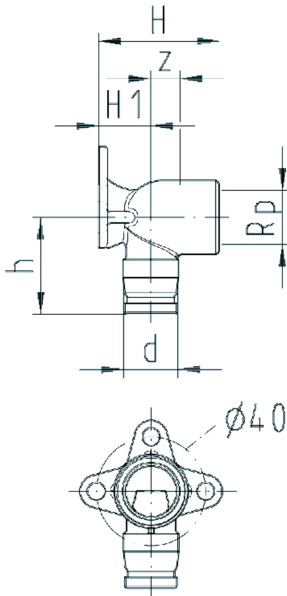


## iFIT Single pipe outlet module brass

Applicable for light and wood construction  
\* low lead



	d (mm)	Rp (inch)	Code	SP	weight (kg)	H (mm)	H1 (mm)	h (mm)	z (mm)
	16 - 20	½	<b>762 101 018</b>	10	0.153	44	19	36	12
*	16 - 20	½	<b>762 101 259</b>	10	0.130	44	19	36	12
	16 - 20	½	<b>762 101 070</b>	5	0.188	64	19	36	32
*	16 - 20	½	<b>762 101 274</b>	5	0.181	64	19	36	32
	16 - 20	½	<b>762 101 321</b>	2	0.272	95	19	39	63
	16 - 20	¾	<b>762 101 019</b>	2	0.173	44	19	39	11
*	16 - 20	¾	<b>762 101 260</b>	2	0.173	44	19	39	11

The technical data are not binding. They neither constitute expressly warranted characteristics nor guaranteed properties nor a guaranteed durability. They are subject to modification. Our General Terms of Sale apply.

Georg Fischer Piping Systems Ltd, Postfach, CH-8201 Schaffhausen/Switzerland Phone +41 -(0)52-631 1111 e-mail:  
info.ps@georgfischer.com Internet: <http://www.gfps.com>